

100 Country Houses

NEW RURAL ARCHITECTURE

edited by Beth Browne



images
Publishing

KILMORE HOUSE

KILMORE, VICTORIA, AUSTRALIA

INTERMODE WITH CARR DESIGN GROUP

The 850-square-metre Kilmore House is situated on a 200-hectare property, 60 kilometres north of Melbourne. The house sits within a paddock previously burnt out by a bushfire. The area is defined by a cluster of burnt tree trunks to the south and views to the property's dam to the north. Surrounded by green country landscape and pasture for Black Angus cattle, the five-bedroom, three-bathroom house enjoys magnificent views and access to the outside from every room via floor-to-ceiling sliding glass doors.

Embracing the philosophy of the modular approach, the house was built over two structures. The main house includes living, dining, kitchen, study, separate laundry, cool room, bedrooms and bathrooms. The entertaining zone is separated from the sleeping zones and again from the master bedroom and ensuite wing by glazed walkways. The guest pavilion, connected to the main house by decking, includes another living area and kitchenette, along with additional guest bedrooms and a bathroom. A custom four-car carport was designed in keeping with the rest of the home.

The pavilions were conceived as freestanding elements, darkly clad, to sit as objects within the stark surrounding landscape. The notion of the pavilion was used to create semi-enclosed external decked areas that provide protection from harsh winds while defining view lines.

Exploring the notion of the pavilions as stand-alone objects, the house forgoes the typical notion of 'front and rear' - instead the pavilions and decking are used to define seasonal areas of dark thoughtful spaces for the cooler months, protected from the elements, as well as light areas for the warmer months to maximise connection with outdoor areas and the cooling breezes.

- 1 Northern façade
- 2 Guest pavilion stepping down to main house
- 3 Northern decking and master bedroom

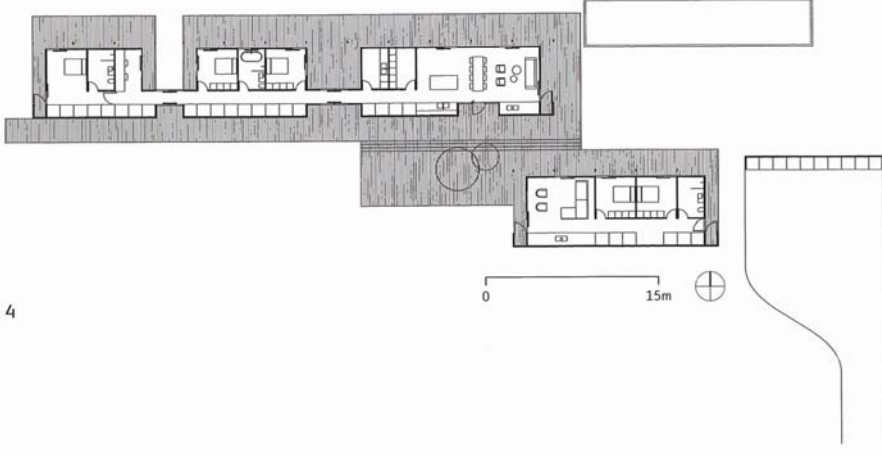
1



2



3



4

- 4 Floor plan
 - 5 Entrance to kitchen from northern deck
 - 6 Main entrance with view down signature hallway
 - 7 Master bedroom
 - 8 Standard bathroom
 - 9 Upgraded bathroom
- Photography: Derek Swalwell



5

6



9



7



8