

LIFE
SPACES

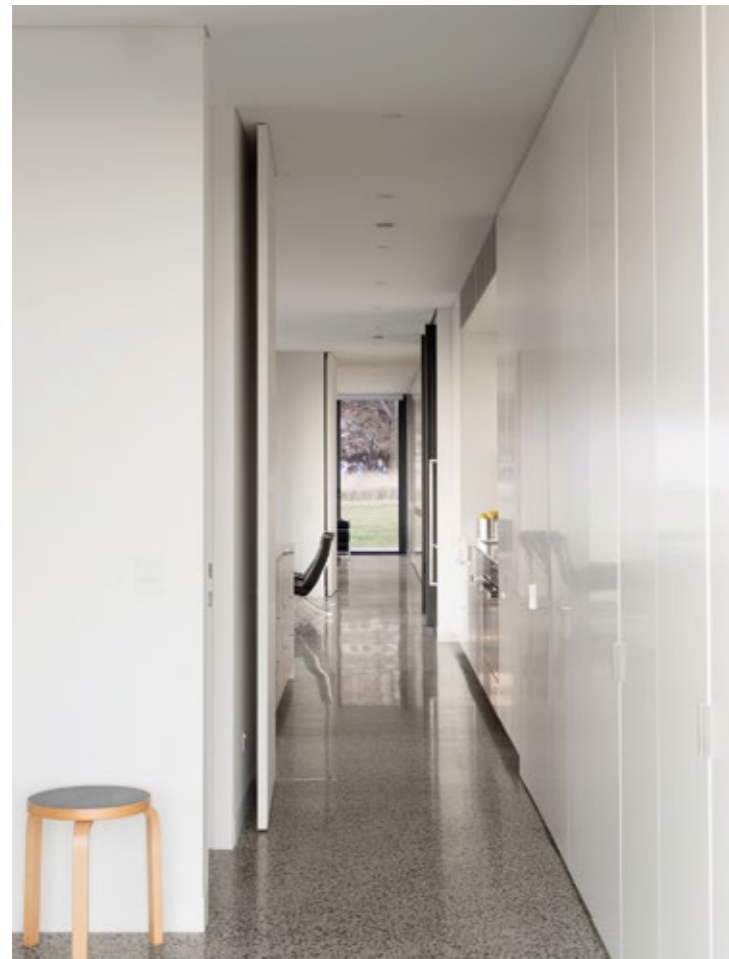
LIVE
WORK
CONNECT

OVER 100
AWARD-WINNING
INTERIORS
FROM
THE 2015
IDEA AWARDS

IDEA interior
design
excellence
awards
2015

SOUTHERN HIGHLANDS HOUSE

INTERMODE

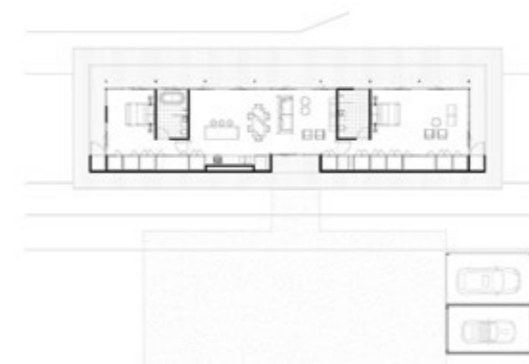


The central concept behind the design was to create a transparent pavilion that hovered above the landscape. Designed to blend seamlessly, the internal and external spaces are conceived as one. This frames and maximises views and outlooks across the dramatic beauty of the Southern Highlands, while creating a sense of retreat and calmness within the interior. Positioned in Exeter, a small rural town in New South Wales, this project had the aim of designing a weekend retreat for a professional couple that would have a deep connection to its landscape. To this end a series of pared back and minimal living spaces housed within a transparent pavilion hover above the rolling open fields of the site on a timber platform, sheltered by an overhanging flat planar roof form. The layout of the building heightens the sense of separation from the city and celebrates the transition to the rural setting through a considered entry sequence. A gravel driveway winds through the site before arriving at a forecourt at the south of the house. The southern façade of the house is predominantly solid, open only at the centre where glazing signals the main entry point. The framed views of the landscape are only revealed once you step inside; the solid wall becomes a threshold to the serene environment of the interior. Internally, the design maximises the transparency of the northern, eastern and western façades, allowing expansive views of the surrounding landscape. A generous deck beyond the glazing extends the perceived living space into the landscape and frames the distant views. The interior planning allows for separation of the two distinct bedroom wings with an open plan living, dining and kitchen area in the centre of the house. The material palette is minimal, refined and serene, maximising the sense of light, transparency and rural sanctuary.



PHOTOGRAPHY

JUSTIN ALEXANDER





SINGLE RESIDENTIAL



MULTI RESIDENTIAL



RESIDENTIAL DECORATION



SMALL WORKPLACES



LARGE WORKPLACES



INTERNATIONAL



PUBLIC SPACES



RETAIL



HOSPITALITY

The Interior Design Excellence Awards (IDEA) is Australia's largest and most successful independent design awards program.

Launched by *(inside)* magazine in 2003, the program celebrates the best of Australian interior and product design across 11 categories and five special awards.

(inside) **ar**
interior design review architectural review Asia Pacific

IDEA interior design excellence awards 2015

RRP AUD\$99.95

